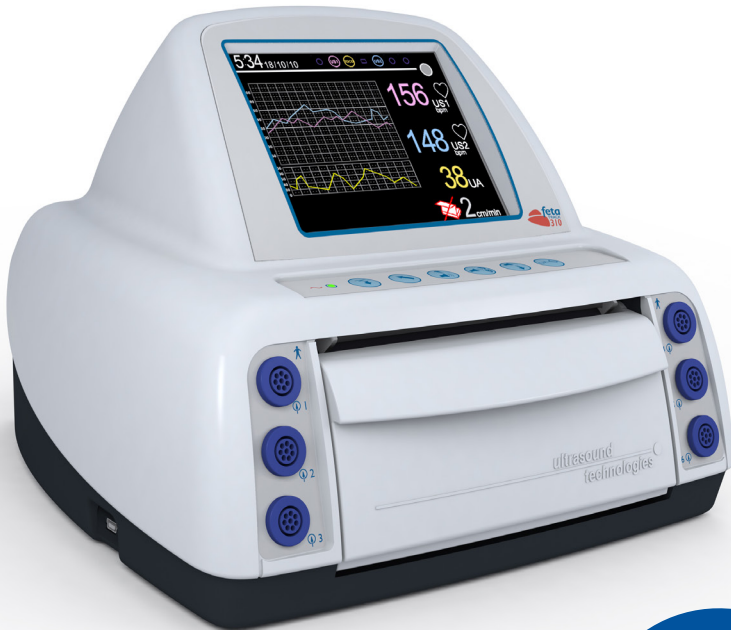


feta TRACK 310



Simply monitoring...

The logo for the fetatrack 310 features a stylized red shape on the left, resembling a drop or a leaf, with the word "feta" in blue lowercase letters and "TRACK" in blue uppercase letters above the number "310" in red. The background of the entire page is a close-up photograph of the device's control panel, showing three blue circular buttons with a grid pattern, labeled "Q1" and "Q2", and a small blue icon of a person walking.

- Simple to Operate
- On Screen Trace View*
- Lightweight and Portable
- Comfortable, contoured transducers
- LED Backlit, Colour Graphic Display
- Single, Twins or Triplet Ultrasound
- Adaptable, Colour Coded Display
- High Resolution Chart Recorder
- Universal transducer connections

- Optional Intrapartum Modules:
 - Internal Uterine Pressure**
 - Direct Fetal ECG**

The fetatrack®310 offers continuous fetal monitoring in the antenatal clinic or labour wards.

The fetatrack®310 has all the necessary facilities for accurate antenatal fetal assessment in one cost effective and compact unit.

Using the optional inline modules, the fetatrack®310 can be used for intrapartum monitoring with fetal ECG and internal uterine pressure measurements available.



Simple to operate, the fetatrack®310 is designed with controls that are easy to learn and understand, the display is a large colour graphic LCD, LED back lit for low light environments. The display allows the user to choose between numeric and graphical fetal heart rate data.*

High resolution multipoint digital autocorrelation provides accurate and reliable FHR traces. Operators can be assured that they are getting the best, most reliable signals and a distinctive alert warns when heart rate is out of range.

There is no loss of data when the paper runs out, as the unit will store the traces until a new pack is installed. The user is alerted with an audible and visual signal.



All fetatrack® products are supplied with a standard 3 year warranty, lowering the cost of ownership. With over 25 years of supplying fetal monitors you can be assured that any problem your fetatrack®310 unit will encounter over its lifetime will be fixed quickly and reliably.



Fully integrated digital transducers allow you to choose the mode of operation you require, from single fetus to twins or even triplets. Standard on the fetatrack®310 is the external toco transducer and hand held event marker, providing a means of patient indicated fetal movement.

Contoured transducers are less obtrusive and greatly aid patient comfort during extended monitoring sessions and are designed to aid correct placement.



* Graphical Trace View only available on fetatrack®310 Elite

** IUP Transducer and ECG electrode sold separately.

ultrasound technologies

| | | |
|---------------------------|--|--|
| Ultrasound | Type Transducer Operating Frequency Power output Audio Range Heart Rate Processing | Continuous Doppler Multi-element wide angle 1.5MHz $\pm 2\%$ or 1.6MHz $\pm 2\%$ or 1.7MHz $\pm 2\%$ 5mW/cm ² max. SATA Response 300 to 1KHz 30 to 250 bpm High resolution multi-point digital autocorrelator |
| External Uterine Activity | Type Response Signal Range | Differential external pressure transducer 0 to 5 Hz 0 - 110 relative contractions strength |
| Internal Uterine Activity | Type Response Signal Range | Internal pressure transducer 0 to 5 Hz 0-100 mmHg |
| Direct Fetal ECG | Signal Range Input Noise CMRR | 40 μ V - 5 mV < 1.4 μ V Peak to Peak > 125 dB |
| Alerts | Low Level Process High Level Process Paper Out | 90 -120BPM, adjustable in steps of 5BPM Bradycardia algorithm or level sense 160 -190BPM, adjustable in steps of 5BPM Tachycardia algorithm or level sense Last paper sheet taken |
| Printer | Printhead Resolution Speeds Paper Paper type | 128 mm thermal array printhead 8 dots / mm 1,2,3, cm / min 145mm wide x 100mm page x15M long, z-fold pack Plain black thermal |
| Display | Display Type Display Size | Full colour, LED backlit, graphic LCD 115 x 86mm |
| Power Supply | AC input voltage Frequency Power Safety | 100–130 VAC or 200–260 VAC 46 – 64 Hz 30 VA Complies with EN60101-1 Class 1 Type B |
| Enclosure | Material Weight Size | PC ABS 4Kg 290 x 260 x 220mm |
| Event Marker | Hand Held Keypad Automatic | User operated pendant switch User operated soft key Ultrasound Transducer detected |
| Computer Interface | Standard | RS232, 9600 baud, 8 bits no parity 1 stop bit |

For further information or to place an order contact your local distributor or :

Ultrasound Technologies Ltd,
Lodge Way, Portskewett,
Caldicot, South Wales,
United Kingdom
NP26 5PS

Telephone +44 (0) 1291 425425
Fax +44 (0) 1291 427093

Email: sales@doppler.co.uk
Website: www.doppler.co.uk

fetatrack® is a registered trademark of Ultrasound Technologies Ltd
All Ultrasound Technologies Products are designed to comply with international standards.
Copyright © Ultrasound Technologies Ltd 2016 Specification subject to change without notice.